

Disproportionality of Minority Youth in the Texas Juvenile Justice System

Jon Olson, CPS State Disproportionality Specialist
Damaris Nicholson, CPS Region 7 Disproportionality Specialist

Outline

- Introduction, Background, and Definitions
- Texas Story – Child Protective Services
- Law Enforcement and Juvenile Justice
- Why?
- What can *YOU* do?
- Final Thoughts

2

Introductions

- Who we are
- Who you are
- The *Values* Worksheet



3

Background and Definitions

- What is Disproportionality?
 - The overrepresentation of a particular race or cultural group in a particular program or system
- What is Disparity?
 - The inequitable or different treatment or services provided to one group as compared to another group

4

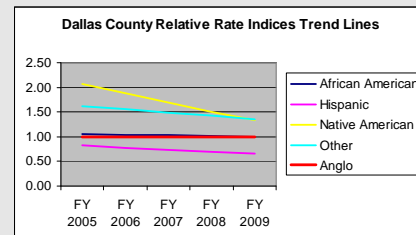
Some Examples

- Disproportionality
 - CPS, Juvenile Justice, TYC, Law Enforcement
- Disparity
 - CPS, health care, banking and finance
- Examples of Systems

5

The Texas Story

A Brief History of Disproportionality Work in Texas Child Protective Services



6

The Texas Story

Some of Our Interventions:

- Family Group Decision Making (FGC's, FTM's, COS's)
- Kinship Caregiver Program
- Disproportionality Specialist Positions
- Community Advisory Committees
- Knowing Who You Are (KWYA)

7

The Texas Story

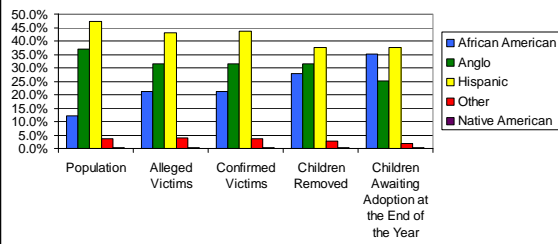
Some of Our Results:

- Disproportionality in the Texas Child Welfare system has been reduced
- The difference between African Americans and Anglos in proportion of removal decisions declined 0.5%

8

The Texas Story

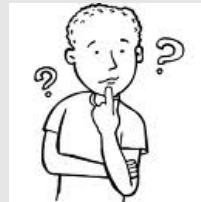
Texas: FY 2010 Comparison of Stages



9

Law Enforcement and Juvenile Justice

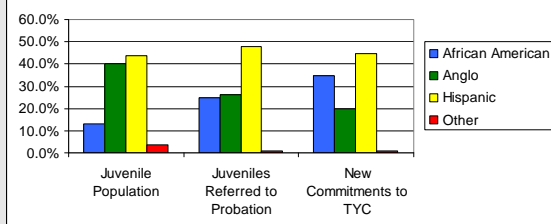
Does Disproportionality exist in your jurisdictions?



10

Law Enforcement and Juvenile Justice

Texas: FY 2009/CY 2008 Juvenile Comparison



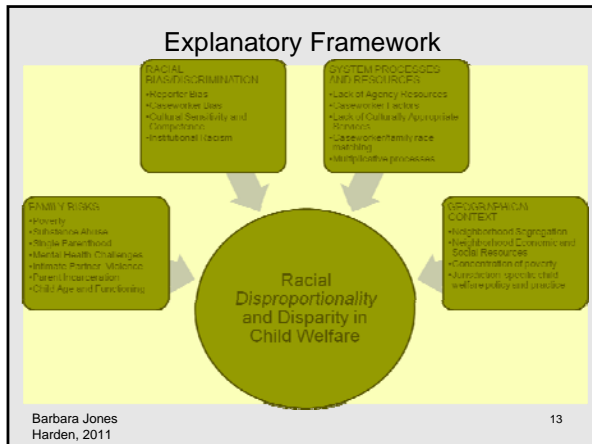
11

WHY?

Why does Disproportionality Occur?



12



WHY?

Why does Disproportionality Matter?

14

WHY?

- Other Reasons for Disproportionality:
 - Institutionalized Racism
 - Worker / Staff / Judicial Bias
 - History
 - Internalized Racial Oppression
 - Gatekeeping

15

What can YOU do?

Some Initial First Steps:

- Talk about race
- Examine Data
- Attend Regional Advisory Committee Meetings
- Attend Knowing Who You Are (KWYA)
- Talk with our partners: TJPC, school districts, CASA's, Judges, attorneys

16

Change It.

- **Think** in new ways.
- **Analyze** in new ways.
- **Talk** in new ways.
- **Act** in new ways.

17

Final Thoughts

18

Contact Information

Jon Olson, State Disproportionality
Specialist

jon.olson@dfps.state.tx.us, 512.438.4937

Damaris Nicholson, Region 7
Disproportionality Specialist

damaris.nicholson@dfps.state.tx.us,
512.834.3424

19